

What our participants are saying...

"I appreciated the holistic approach to the health and social needs of individuals in our society."

Cincinnati, OH

"As a Community Health Worker (CHW) Supervisor I have broader understanding of the scope of practice and perception of CHWs in the field. This class professionally enhances one's appreciation of the client, community responsibility, advocacy and promotes lifelong learning. Thank you to HCAN for offering a rewarding education which leads to advance opportunities."

Cincinnati, OH

**For more information
or to make a referral,
call 513-707-5697.**

You will be connected to a
Community Health Worker.

To learn more
scan the QR code:



The Community Health Worker
Certification Program is service of
Health Care Access Now.

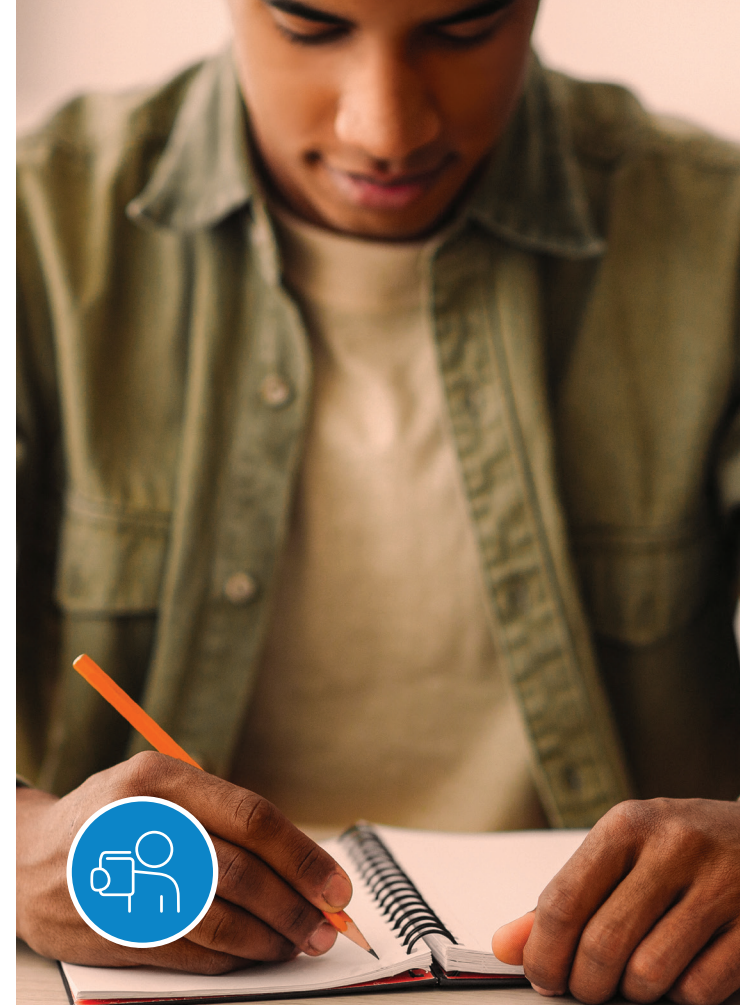
2602 Victory Parkway, Cincinnati, OH 45206
513-707-5697

Health Care
Access Now™



www.healthcareaccessnow.org

©7/21



Community Health Worker Certification Program

Developing community health workers who
excel in coordinating the care of those most
at-risk for poor health

Health Care
Access Now™



Ohio Board of Nursing Approved Program

Health Care Access Now curriculum was approved by the Ohio Board of Nursing in 2018.

The Community Health Worker (CHW) model was initially developed in 1989 based upon the competencies outlined in the Alaskan Community Health Aide model. The curriculum was revised according to the 1998 National CHW Study, and has been regularly updated to exceed national standards. The program brings the professional expertise of thirty years of working with CHWs in diverse settings.

Program Requirements

- Full attendance is required for all in-class hours
- Applicants must submit a copy of a high school diploma or GED documentation and a reference letter
- A copy of the applicant's driver's license is required to verify that applicant is at least 18 years of age
- Physical exam and immunizations verification from a medical provider required prior to the start of the program.
- Immunization updates should include, but not limited to: Tdap, MMR, Hepatitis B series and PPD.
- An acceptable BCI & FBI report is needed prior to participation in the Practicum
- A 75% competency level in each skill evaluation is required to complete the training program; A "Pass" indicates that the 75% has been met.

The program includes:

- over 100 in-class hours that address core competencies in general health, social services, communications, advocacy, CPR, lifespan development, and basic CHW skills
- a 130-hour community-based practicum as required by the Ohio Board of Nursing (OBN) for state certification as a community health worker.

Program Schedule

The in-class portion of the program is offered as a weekday session on Mondays and Fridays or as an evening session on Tuesdays and Thursdays for fourteen weeks. Contact us for session start dates.

Program Cost

Full tuition\$3,600

Includes a non-refundable application fee of \$250. Tuition includes full program instruction and textbooks.

Optional certifications:

Mental Health First Aid\$170

CPR.....\$45

Tuition must be paid in full to Health Care Access Now prior to starting classes.

To Register

Visit us online: healthcareaccessnow.org

Email: info@healthcareaccessnow.org

Phone: Ella Thomas, M.Ed., C-CHW, RMA
Director of Education and Development
513-245-4348

Melinda Spong
Administrative Specialist
513-707-5696

